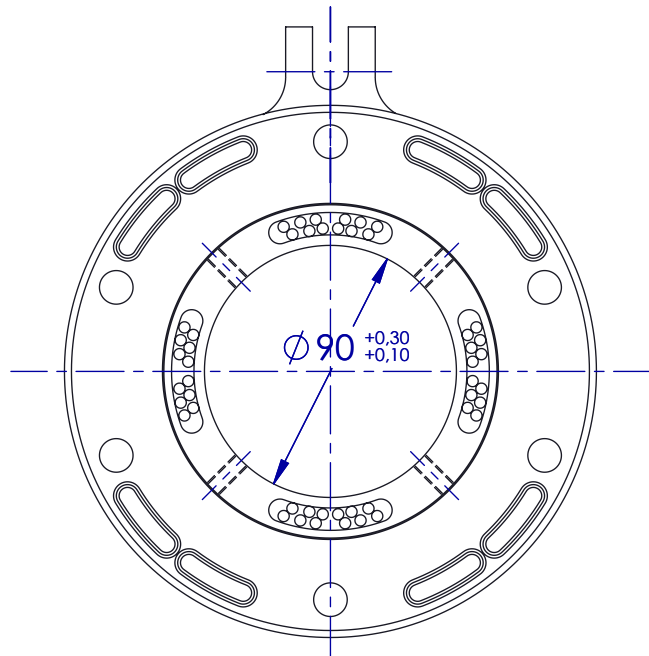
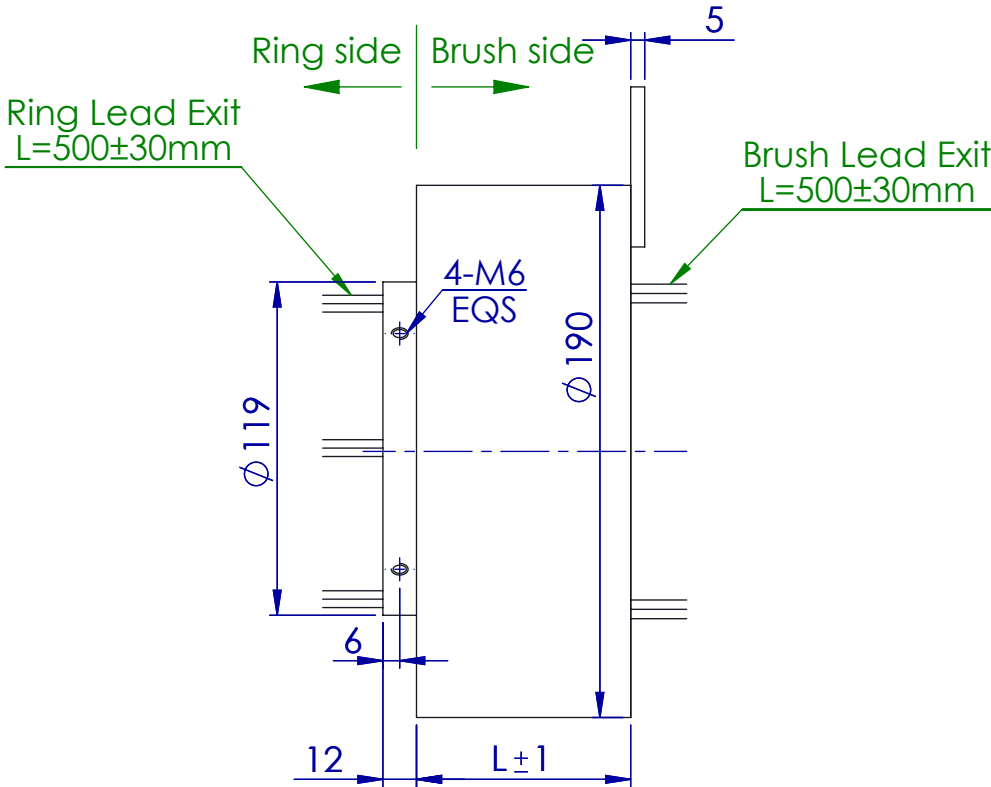
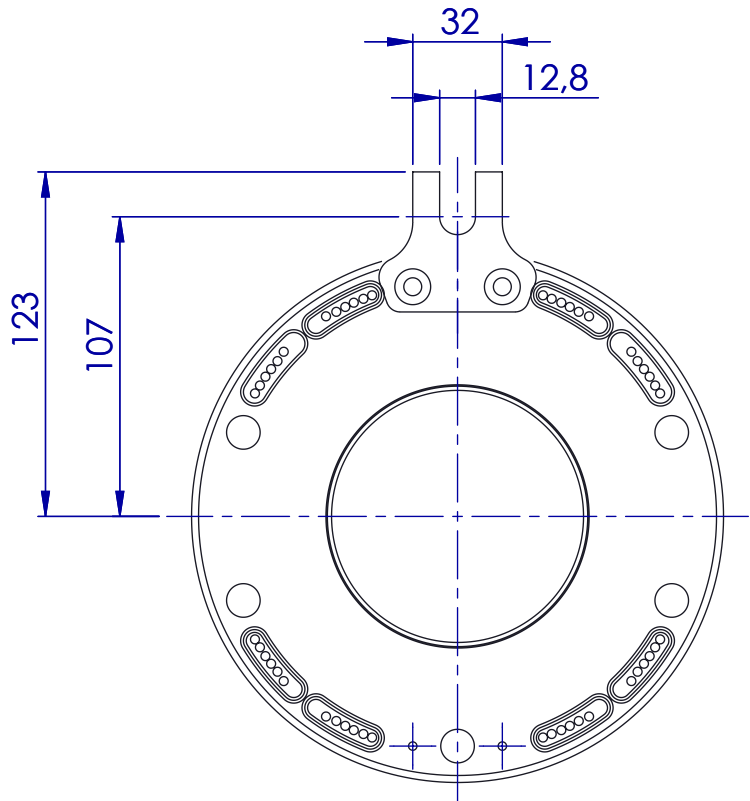


All rights strictly reserved.  
Reproduction or issue to third parties in any form whatever is not permitted without written authority from the property

Tutti i diritti sono strettamente riservati. La riproduzione o la comunicazione a terzi è vietata, in qualunque forma senza autorizzazione scritta della proprietà



	Total	Power	Signals		Weight(kg)			Total	Power	Signals		Weight(kg)	
		20A	5A	L	IP51	IP65			20A	5A	L	IP51	IP65
SVTS C 10-x-A-06/00	6	6	-	77	2,8	5,2	SVTS C 10-x-A-36/00	36	36	-	227	7,3	11,3
SVTS C 10-x-A-00/12	12	-	12	77	2,8	5,2	SVTS C 10-x-A-30/12	42	30	12	227	7,3	11,3
SVTS C 10-x-A-12/00	12	12	-	107	3,7	6,4	SVTS C 10-x-A-24/24	48	24	24	227	7,3	11,3
SVTS C 10-x-A-06/12	18	6	12	107	3,7	6,4	SVTS C 10-x-A-18/36	54	18	36	227	7,3	11,3
SVTS C 10-x-A-00/24	24	-	24	107	3,7	6,4	SVTS C 10-x-A-12/48	60	12	48	227	7,3	11,3
SVTS C 10-x-A-18/00	18	18	-	137	4,6	7,7	SVTS C 10-x-A-06/60	66	6	60	227	7,3	11,3
SVTS C 10-x-A-12/12	24	12	12	137	4,6	7,7	SVTS C 10-x-A-00/72	72	-	72	227	7,3	11,3
SVTS C 10-x-A-06/24	30	6	24	137	4,6	7,7	SVTS C 10-x-A-42/00	42	42	-	257	8,2	12,6
SVTS C 10-x-A-00/36	36	-	36	137	4,6	7,7	SVTS C 10-x-A-36/12	48	36	12	257	8,2	12,6
SVTS C 10-x-A-24/00	24	24	-	167	5,5	8,9	SVTS C 10-x-A-30/24	54	30	24	257	8,2	12,6
SVTS C 10-x-A-18/12	30	18	12	167	5,5	8,9	SVTS C 10-x-A-24/36	60	24	36	257	8,2	12,6
SVTS C 10-x-A-12/24	36	12	24	167	5,5	8,9	SVTS C 10-x-A-18/48	66	18	48	257	8,2	12,6
SVTS C 10-x-A-06/36	42	6	36	167	5,5	8,9	SVTS C 10-x-A-12/60	72	12	60	257	8,2	12,6
SVTS C 10-x-A-00/48	48	-	48	167	5,5	8,9	SVTS C 10-x-A-06/72	78	6	72	257	8,2	12,6
SVTS C 10-x-A-30/00	30	30	-	197	6,4	10,2	SVTS C 10-x-A-00/84	84	-	84	257	8,2	12,6
SVTS C 10-x-A-24/12	36	24	12	197	6,4	10,2	SVTS C 10-x-A-48/00	48	48	-	287	9,1	13,8
SVTS C 10-x-A-18/24	42	18	24	197	6,4	10,2	SVTS C 10-x-A-42/12	54	42	12	287	9,1	13,8
SVTS C 10-x-A-12/36	48	12	36	197	6,4	10,2	SVTS C 10-x-A-36/24	60	36	24	287	9,1	13,8
SVTS C 10-x-A-06/48	54	6	48	197	6,4	10,2	SVTS C 10-x-A-30/36	66	30	36	287	9,1	13,8
SVTS C 10-x-A-00/60	60	-	60	197	6,4	10,2	SVTS C 10-x-A-24/48	72	24	48	287	9,1	13,8
							SVTS C 10-x-A-18/60	78	18	60	287	9,1	13,8
							SVTS C 10-x-A-12/72	84	12	72	287	9,1	13,8
							SVTS C 10-x-A-06/84	90	6	84	287	9,1	13,8
							SVTS C 10-x-A-00/96	96	-	96	287	9,1	13,8

	Power Rings	Signal Rings
Current	20A	5A
Voltage	600Vac/600Vdc	240Vac/240Vdc
Leads AWG	12	22
Contact material	Precious metals	Precious metals
Dielectric strength	1500VAC@60Hz,60s	500VAC@60Hz,60s
Insulation resistance	≥1000MΩ/500VDC	≥500MΩ/500VDC
Leads	tinning PTFE	
Dynamic contact resistance	<100mΩ @6Vdc 50mA 5RPM	
Suggested Speed	400RPM	
Temperature	-20°C~+80°C(ET option -40°C~+80°C)	
Housing material	Aluminum alloy	
Protection degree	IP51*	
Bearings	steel ball bearings	

\*Note: For IP65 option L=L+28mm

TRATTAMENTO TREATMENT:		4	01/06/2016	Aggiornamento Part Number				
		3	01/06/2016	Aggiornamento Part Number				
		2	02/11/2015	Aggiunti valori di massa				
		1	14/02/2013	Correzione caretteristiche elettriche				
MATERIALE MATERIAL:		0	24/08/2012	Prima emissione				
		REV. Nr REV N°	DATA/DATE	DESCRIZIONE/DESCRIPTION				
PESO WEIGHT		Tolleranze/Tolerances UNI EN 22768-1		TITLE - TITOLO SVTS C 10	DRAWING Nr. - DISEGNO N° 000-078			
		FINE						
		MEDIA	x	DATE DATA 24/08/2012	SH. FG. 1			
		GROSSOLANA						
		MOLTO GROSSOLANA		CHECK CONTR. AG	DRAW. DIS. AG			
		FORM A3	CODICE SERVOTECNICA					
		PROPERTY PROPRIETÀ SERVOTECNICA S.P.A. - VIA MAJORANA,4 - NOVA MILANESE(MB) - www.servotecnica.com						