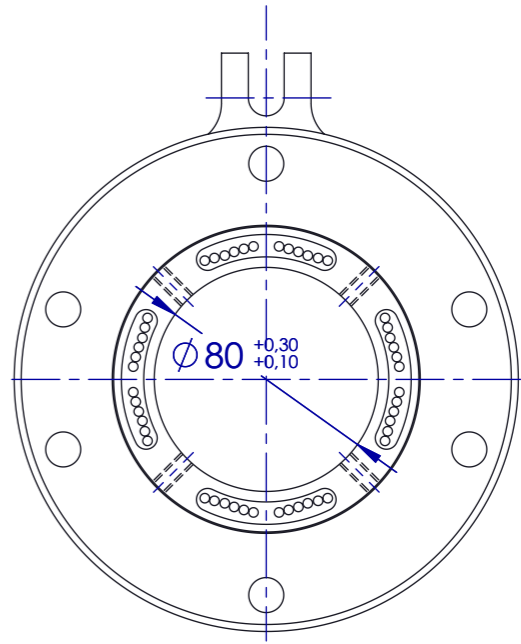
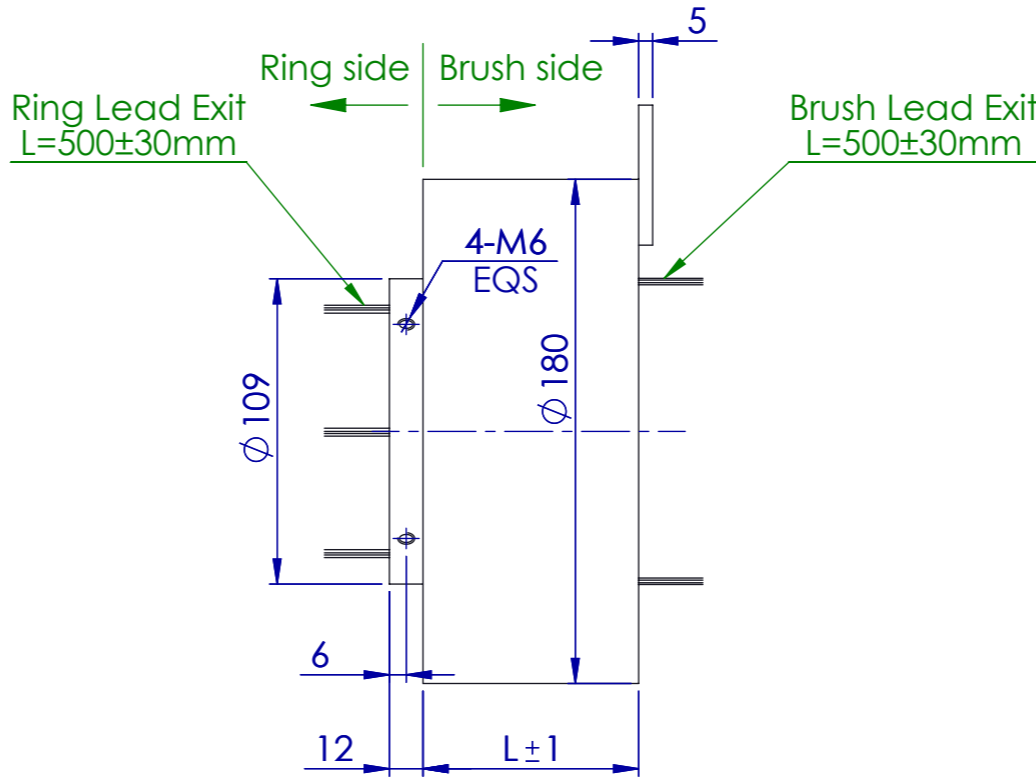
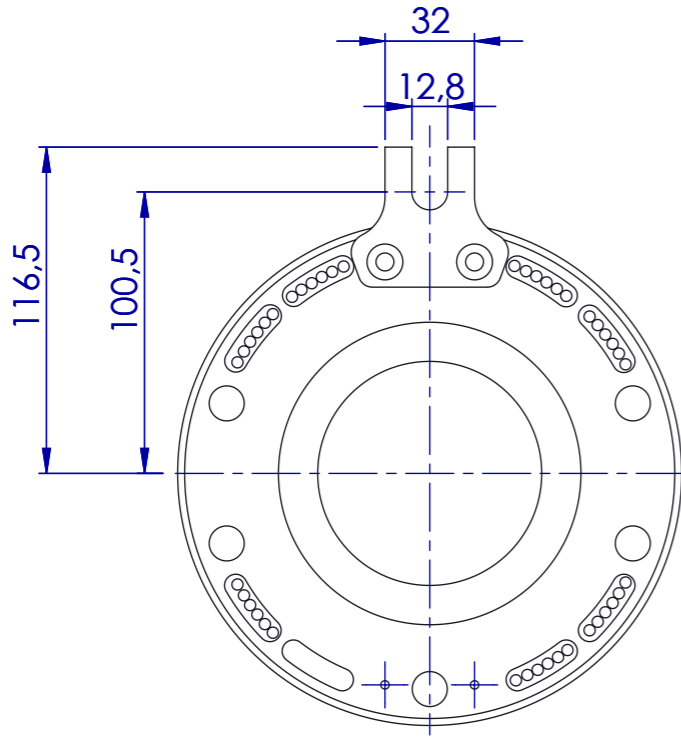


All rights strictly reserved.
Reproduction or issue to third parties in any form whatever is not permitted without written authority from the property


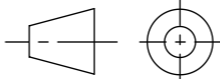
Tutti i diritti sono strettamente riservati. La riproduzione o la comunicazione a terzi è vietata, in qualunque forma senza autorizzazione scritta della proprietà



	Total	Power	Signals		Weight(kg)			Total	Power	Signals		Weight(kg)	
		20A	5A	L	IP51	IP65			20A	5A	L	IP51	IP65
SVTS C 09-S-A-06/00	6	6	-	77	2,7	4,5	SVTS C 09-S-A-36/00	36	36	-	227	7	10,3
SVTS C 09-S-A-00/12	12	-	12	77	2,7	4,5	SVTS C 09-S-A-30/12	42	30	12	227	7	10,3
SVTS C 09-S-A-12/00	12	12	-	107	3,6	5,6	SVTS C 09-S-A-24/24	48	24	24	227	7	10,3
SVTS C 09-S-A-06/12	18	6	12	107	3,6	5,6	SVTS C 09-S-A-18/36	54	18	36	227	7	10,3
SVTS C 09-S-A-00/24	24	-	24	107	3,6	5,6	SVTS C 09-S-A-12/48	60	12	48	227	7	10,3
SVTS C 09-S-A-18/00	18	18	-	137	4,5	6,8	SVTS C 09-S-A-06/60	66	6	60	227	7	10,3
SVTS C 09-S-A-12/12	24	12	12	137	4,5	6,8	SVTS C 09-S-A-00/72	72	-	72	227	7	10,3
SVTS C 09-S-A-06/24	30	6	24	137	4,5	6,8	SVTS C 09-S-A-42/00	42	42	-	257	7,9	11,6
SVTS C 09-S-A-00/36	36	-	36	137	4,5	6,8	SVTS C 09-S-A-36/12	48	36	12	257	7,9	11,6
SVTS C 09-S-A-24/00	24	24	-	167	5,3	7,6	SVTS C 09-S-A-30/24	54	30	24	257	7,9	11,6
SVTS C 09-S-A-18/12	30	18	12	167	5,3	7,6	SVTS C 09-S-A-24/36	60	24	36	257	7,9	11,6
SVTS C 09-S-A-12/24	36	12	24	167	5,3	7,6	SVTS C 09-S-A-18/48	66	18	48	257	7,9	11,6
SVTS C 09-S-A-06/36	42	6	36	167	5,3	7,6	SVTS C 09-S-A-12/60	72	12	60	257	7,9	11,6
SVTS C 09-S-A-00/48	48	-	48	167	5,3	7,6	SVTS C 09-S-A-06/72	78	6	72	257	7,9	11,6
SVTS C 09-S-A-30/00	30	30	-	197	6,2	9,1	SVTS C 09-S-A-00/84	84	-	84	257	7,9	11,6
SVTS C 09-S-A-24/12	36	24	12	197	6,2	9,1	SVTS C 09-S-A-48/00	48	48	-	287	8,7	12,6
SVTS C 09-S-A-18/24	42	18	24	197	6,2	9,1	SVTS C 09-S-A-42/12	54	42	12	287	8,7	12,6
SVTS C 09-S-A-12/36	48	12	36	197	6,2	9,1	SVTS C 09-S-A-36/24	60	36	24	287	8,7	12,6
SVTS C 09-S-A-06/48	54	6	48	197	6,2	9,1	SVTS C 09-S-A-30/36	66	30	36	287	8,7	12,6
SVTS C 09-S-A-00/60	60	-	60	197	6,2	9,1	SVTS C 09-S-A-24/48	72	24	48	287	8,7	12,6
							SVTS C 09-S-A-18/60	78	18	60	287	8,7	12,6
							SVTS C 09-S-A-12/72	84	12	72	287	8,7	12,6
							SVTS C 09-S-A-06/84	90	6	84	287	8,7	12,6
							SVTS C 09-S-A-00/96	96	-	96	287	8,7	12,6

	Power Rings	Signal Rings
Current	20A	5A
Voltage	600Vac/600Vdc	240Vac/240Vdc
Leads AWG	12	22
Contact material	Precious metals	Precious metals
Dielectric strength	1500VAC@60Hz,60s	500VAC@60Hz,60s
Insulation resistance	≥1000MΩ/500VDC	≥500MΩ/500VDC
Leads	tinning PTFE	
Dynamic contact resistance	<100mΩ @6Vdc 50mA 5RPM	
Suggested Speed	400RPM	
Temperature	-20°C~+80°C(ET option -40°C~+80°C)	
Housing material	Aluminum alloy	
Protection degree	IP51*	
Bearings	steel ball bearings	

*Note: For IP65 option L=L+31,5mm

TRATTAMENTO TREATMENT:				4	01/06/2016	Aggiornamento Part Number			
				3	01/06/2016	Aggiornamento Part Number			
				2	02/11/2015	Aggiunti valori di massa			
				1	14/02/2015	Correzione caratteristiche elettriche			
				0	22/08/2012	Prima emissione			
MATERIALE MATERIAL:		REV. Nr REV N°		DATA/DATE	DESCRIZIONE/DESCRIPTION				
PESO WEIGHT		Tolleranze/Tollerances UNI EN 22768-1		TITLE - TITOLO SVTS C 09				DRAWING Nr. - DISEGNO N° 000-077	
		<table border="1"><tr><td>FINE</td><td></td></tr><tr><td>MEDIA</td><td>X</td></tr><tr><td>GROSSOLANA</td><td></td></tr><tr><td>MOLTO GROSSOLANA</td><td></td></tr></table>							
FINE									
MEDIA	X								
GROSSOLANA									
MOLTO GROSSOLANA									
				DATE DATA	22/08/2012	SH. FG.	1	CODICE SERVOTECNICA	
				CHECK CONTR.	AG	DRAW. DIS.	AG		
		FORM A3		PROPERTY PROPRIETÀ					
SERVOTECNICA S.P.A. - VIA MAJORANA,4 - NOVA MILANESE(MB) - www.servotecnica.com									