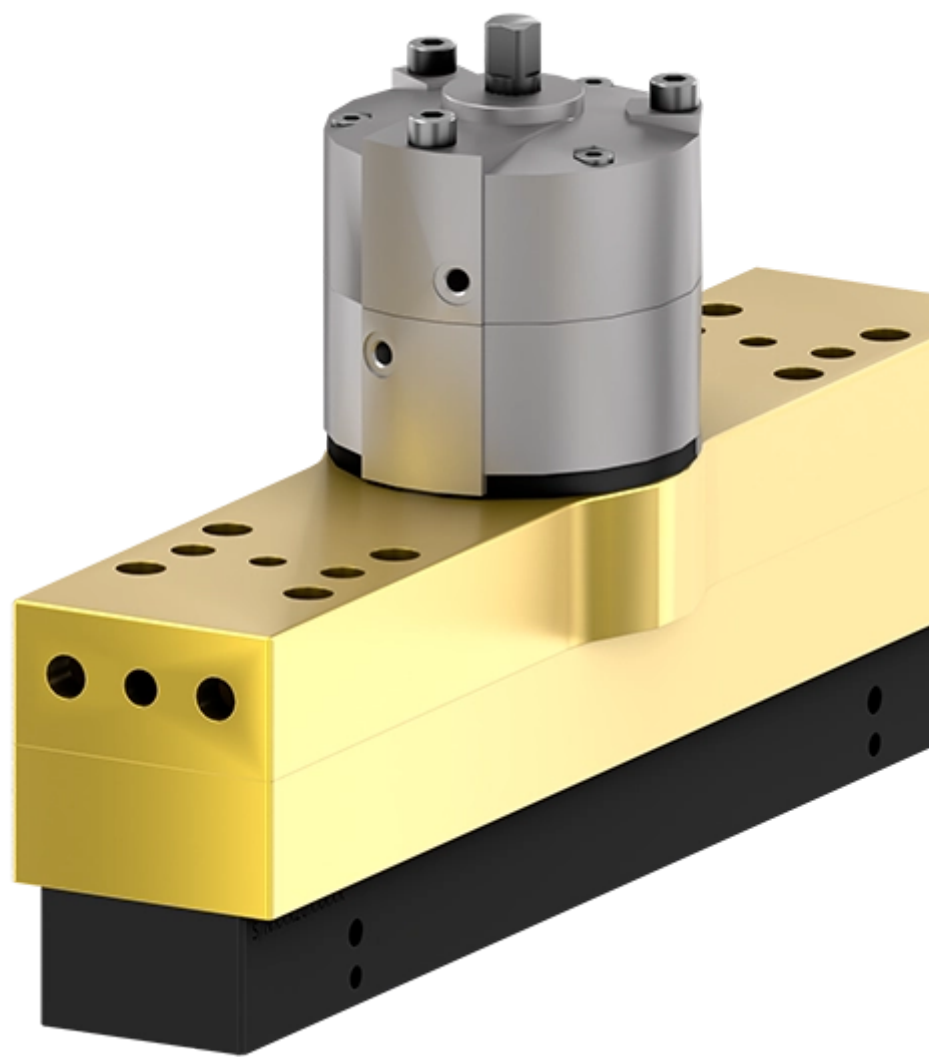


variables/V-color

**Magnetic Tool | LAY Series | PLAY30x7**





## Feature

### PLAY30x7

<b>Weight</b>	4.80 kg
<b>Max Breakaway <sup>1</sup></b>	355.00 kg
<b>Working Load <sup>2</sup></b>	88.70 kg
<b>Optimal material thickness</b>	12.70 mm
<b>Max shear</b>	48.80 kg
<b>Overall Height</b>	179.80 mm
<b>Magnetic pole footprint</b>	41x258.2 mm

<sup>1</sup> Safety factor 2:1

<sup>2</sup> Safety factor 4:1

**Notice :** The provided technical data are the higher limits recommended in static condition. To obtain the correct dimensioning of the product, it is necessary to hold account of all the applicable dynamic forces, including the inertia of the manipulator, the configuration of the tools and the external forces applied.

## Multiple magnets for handling power and control

Ideal for long cylinders, tubing and rough surface finishes, the multiple magnetic fields in LAY units ensure strong holding forces on thin material. Each unit comes with replaceable pole shoes for improved on-site serviceability.



## Advantages

- Double effect pneumatic actuator offering high duty cycle
- Custom pole shoes offer mechanical function integration capability
- Linear array of multiple magnets for increased power and increased handling control of long parts with a limited energy consumption
- Intrinsic safety thanks to 183° movement for natural lstop locking



## Benefits

- Limited maintenance costs
- Reduced cycle time
- Controlled integration costs



**pes**

product  
engineering  
services

**expertise in connectivity**