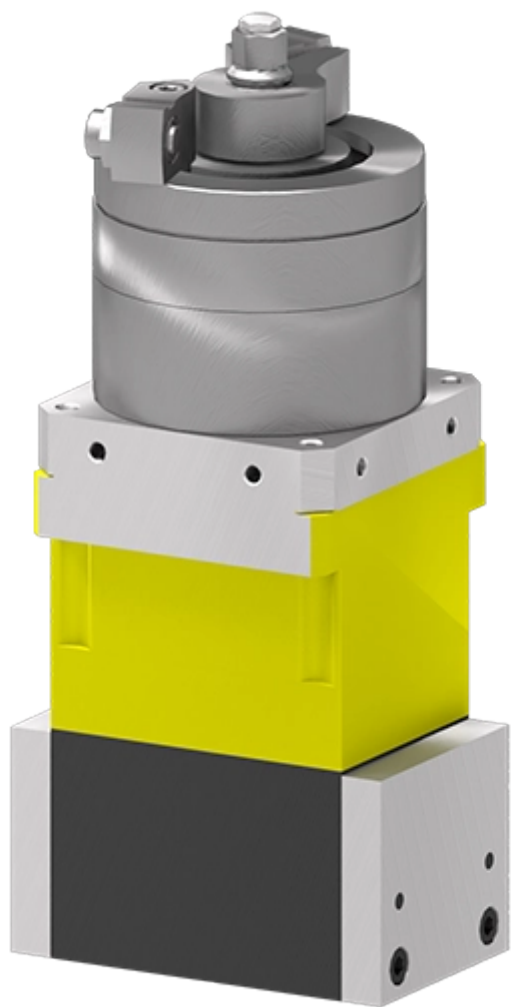


variables/V-color

## **Magnetic Tool | AR Series | AR110 HDC**





## Feature

### AR110 HDC

|                                   |              |
|-----------------------------------|--------------|
| <b>Weight</b>                     | 22.50 kg     |
| <b>Max Breakaway <sup>1</sup></b> | 1530.90 kg   |
| <b>Working Load <sup>2</sup></b>  | 382.70 kg    |
| <b>Optimal material thickness</b> | 38.10 mm     |
| <b>Max shear</b>                  | 95.70 kg     |
| <b>Overall Height</b>             | 330.70 mm    |
| <b>Magnetic pole footprint</b>    | 150x113.9 mm |

<sup>1</sup> Safety factor 2:1

<sup>2</sup> Safety factor 4:1

**Notice :** The provided technical data are the higher limits recommended in static condition. To obtain the correct dimensioning of the product, it is necessary to hold account of all the applicable dynamic forces, including the inertia of the manipulator, the configuration of the tools and the external forces applied.

## The multipurpose, high performance a safe magnetic gripping

Temperature of the operated surface can reach 80°C for Classic versions and 220°C or higher for High Heat versions (please contact us of high temperture applications). Note: You may have to design and fabricate custom pole shoes depending on your application for optimal performances



## Advantages

- Double effect pneumatic actuator offering high duty cycle
- Custom pole shoes offer mechanical function integration capability
- Intrinsic safety thanks to 183° movement for natural lstop locking



## Benefits

- Limited maintenance costs
- Reduced cycle time
- Controlled integration costs



---

**expertise in connectivity**