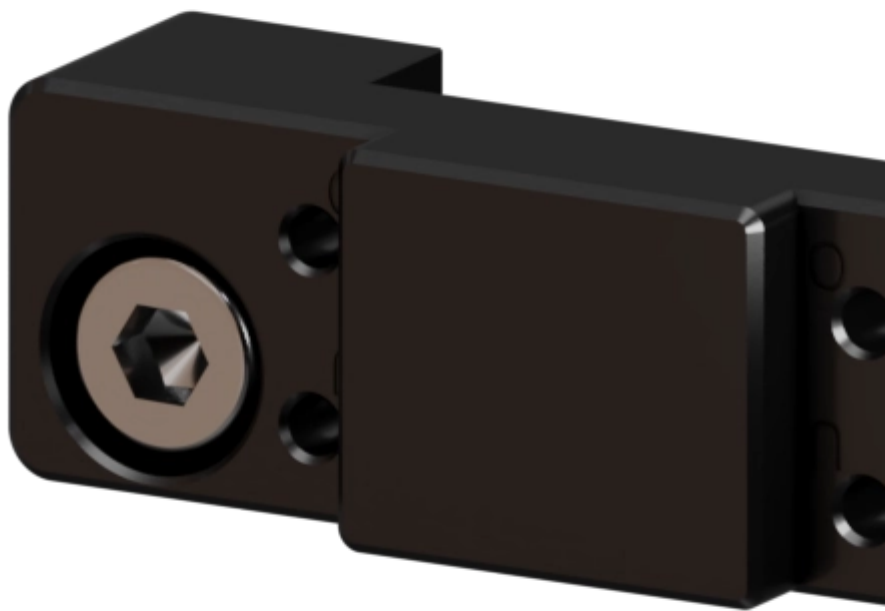


Manual Robotic Tool Changers | Other | AP-SEK100-SHW160

Sous titre

Range of manual interchange adapter plates



Adapt any electric or hybrid module to the different models of robots thanks to this adapter plate

In order to adapt the different modules of the SEK range to the SHWs, we have developed an adapter plate which allows the electrical and hybrid modules to be connected.

Advantages

Benefits

- Simple design and easy to you
- Cost-effective

Related industries

At your service

Need help in selecting the right product ?

Need more information ?

[Contact us](#)

- [PDF](#)

-
- [Technical Info](#)
 - [Drawings](#)
 - [3D](#)

AP-SEK100-SHW160

Operating temperature -30 to +120 °C

Type Other

Protection rating IP40

Contact durability 50000 cycles

Materials Al, anod.

Operating pressure -1 to 8 bar

Electrical Ducts

Notice : The provided technical data are the higher limits recommended in static condition. To obtain the correct dimensioning of the product, it is necessary to hold account of all the applicable dynamic forces, including the inertia of the manipulator, the configuration of the tools and the external forces applied.

No files actually

For more informations

[Contact us](#)

No files actually

For more informations

[Contact us](#)

The manual Tool Changers are designed and manufactured by GRIP Gmbh.

Product Engineering Services is the Distributor of GRIP for the territory of Belgium and France

Applications