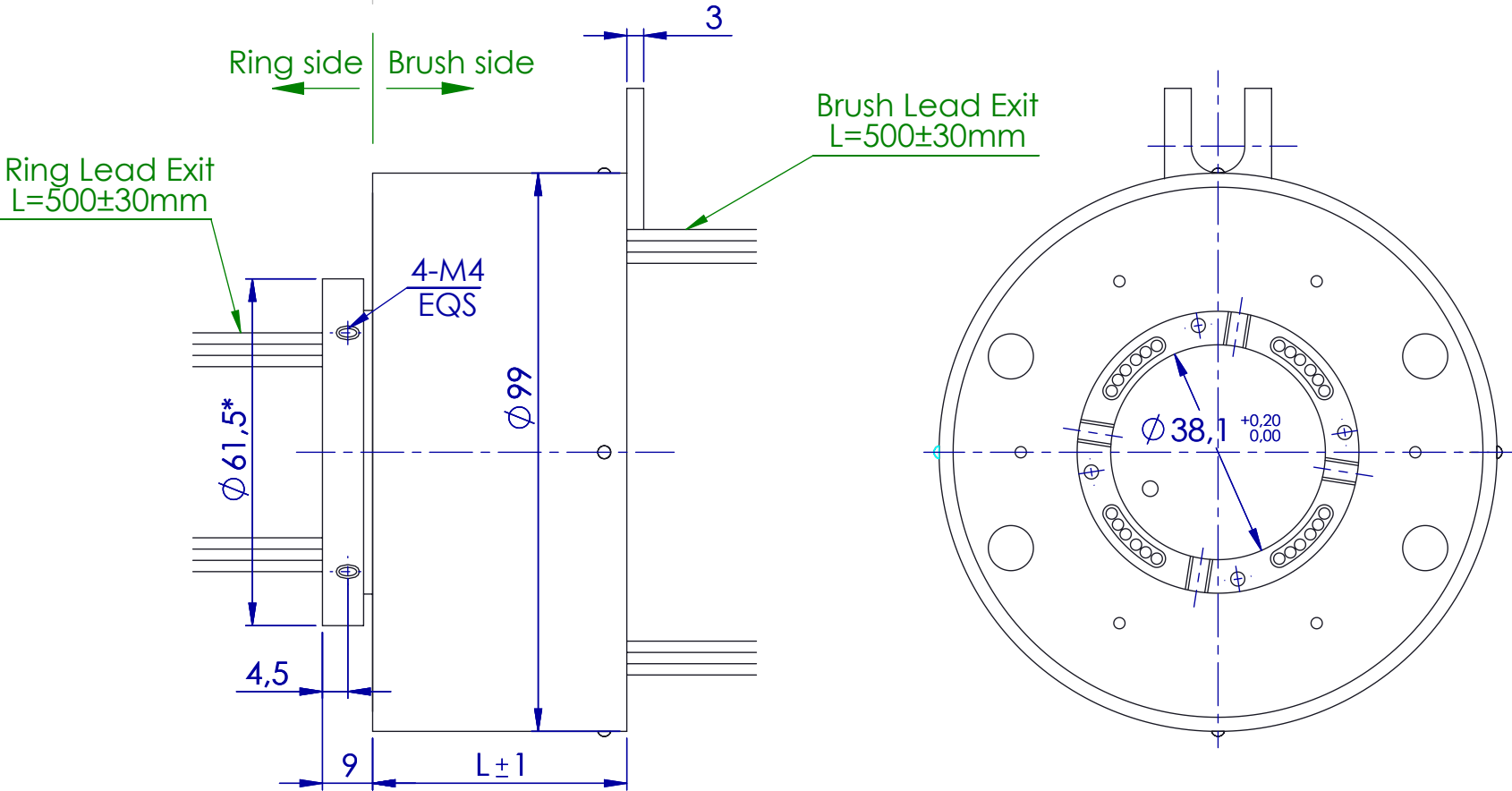
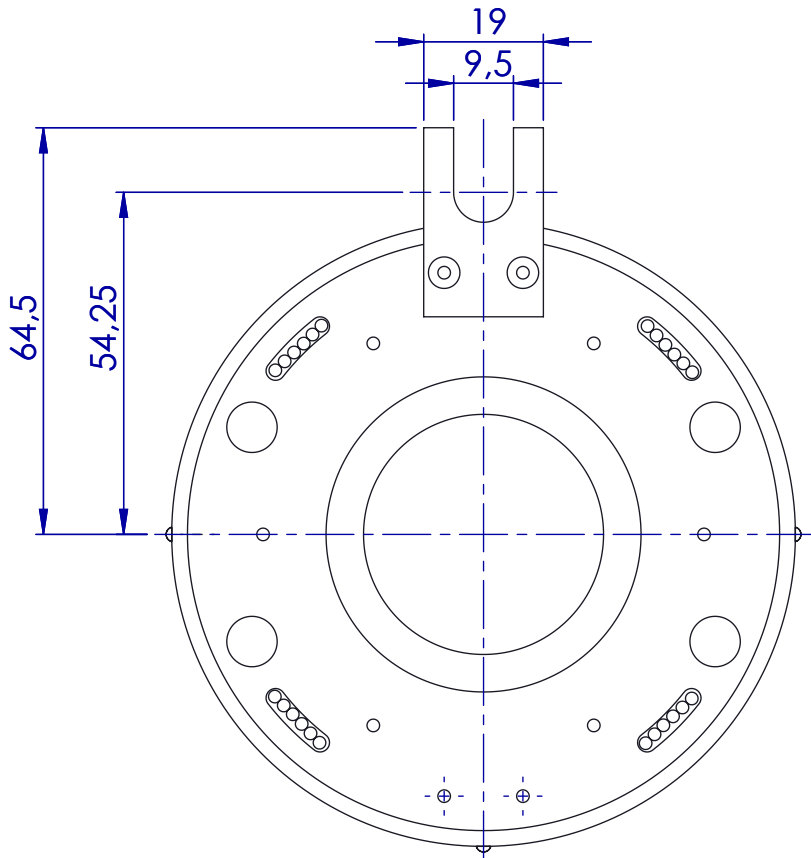


All rights strictly reserved.  
Reproduction or issue to third parties in any form whatever is not permitted without written authority from the property


Tutti i diritti sono strettamente riservati. La riproduzione o la comunicazione a terzi è vietata, in qualunque forma senza autorizzazione scritta della proprietà



	Total	Power	Signals	L	Weight(kg)	
		15A	2A		IP51	IP65
SVTS C 05-x-A-06/00	6	6	-	45	0,7	1,4
SVTS C 05-x-A-00/12	12	-	12	45	0,7	1,4
SVTS C 05-x-A-12/00	12	12	-	69	1	2
SVTS C 05-x-A-06/12	18	6	12	69	1	2
SVTS C 05-x-A-00/24	24	-	24	69	1	2
SVTS C 05-x-A-18/00	18	18	-	93	1,2	2,5
SVTS C 05-x-A-12/12	24	12	12	93	1,2	2,5
SVTS C 05-x-A-06/24	30	6	24	93	1,2	2,5
SVTS C 05-x-A-00/36	36	-	36	93	1,2	2,5
SVTS C 05-x-A-24/00	24	24	-	117	1,5	3,1
SVTS C 05-x-A-18/12	30	18	12	117	1,5	3,1
SVTS C 05-x-A-12/24	36	12	24	117	1,5	3,1
SVTS C 05-x-A-06/36	42	6	36	117	1,5	3,1
SVTS C 05-x-A-00/48	48	-	48	117	1,5	3,1

	Power Rings	Signal Rings
Current	15A	2A
Voltage	600Vac/600Vdc	240Vac/240Vdc
Leads AWG	14	26
Contact material	Precious metals	Precious metals
Dielectric strength	1500VAC@60Hz,60s	500VAC@60Hz,60s
Insulation resistance	≥1000MΩ/500VDC	≥500MΩ/500VDC
Leads	tinning PTFE	
Dynamic contact resistance	<100mΩ @6Vdc 50mA 5RPM	
Suggested Speed	600RPM	
Temperature	-20°C~+80°C(ET option -40°C~+80°C)	
Housing material	engineering plastic*	
Protection degree	IP51*	
Bearings	steel ball bearings	

\*Note: For IP65 option L=L+20mm and Ø 54,5mm - Housing material aluminum alloy

TRATTAMENTO TREATMENT:				4	01/06/2016	Correzioni		
				3	01/06/2016	Aggiornamento Part Number		
				2	02/11/2015	Aggiunti valori di massa		
				1	14/02/2013	Correzione caratteristiche elettriche		
				0	21/05/2012	Prima emissione		
MATERIALE MATERIAL:		REV. Nr REV N°	DATA/DATE	DESCRIZIONE/DESCRIPTION				
PESO WEIGHT		Tolleranze/Tolerances UNI EN 22768-1		TITLE - TITOLO SVTS C 05			DRAWING Nr. - DISEGNO N°  000-073	