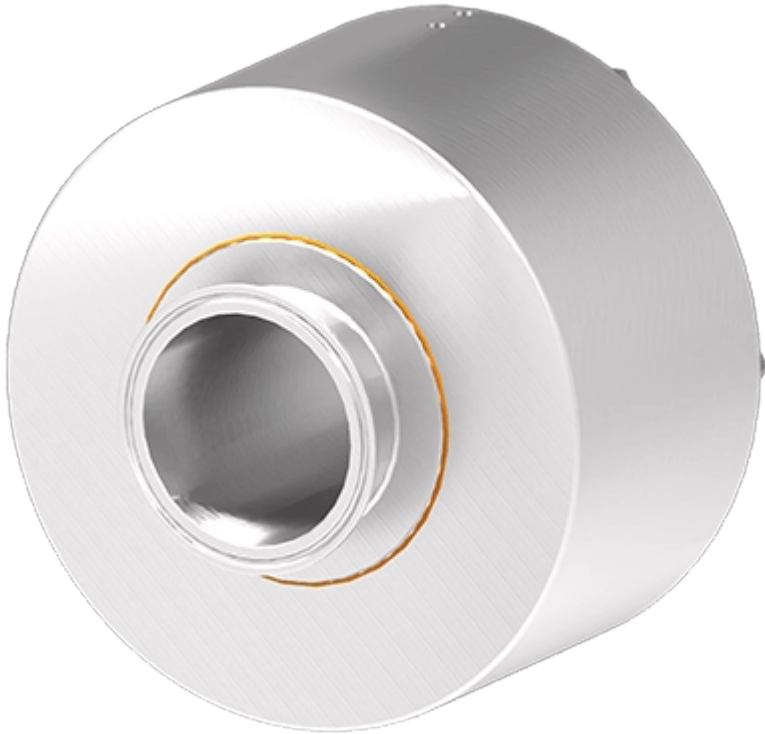


variables/V-color

Rotary Union | 1 passage | SCS(M) 613010



The SCSM Series rotary unions feature tri-clamp ferrule connections and an FDA approved design for use with CIP (Clean-in-Place) systems.



Feature

	SCS(M) 613010
Type	Sanitary Tri-clamp
Passages	1 passage

SCS(M) 613010

Overall Diameter	227.100 mm
Overall length	188.700 mm
Min Torque	38.420 Nm
Passage Size	97.400 mm
Maximum Pressure ¹	1.5 MPa (15 bar)
Maximum Vacuum ¹	24 HG
Max Speed ¹	75 rpm
Temperature Range ¹	-18°C à 105°C

¹ Values are dependent on a combination of all application parameters.
Please consult PES.

Food-grade rotary union, tri-clamp ferrule connections



General information

SCS(M) 613010

Connection Sizes	DN15, DN20, DN32, DN50, DN65, DN80, DN100
Connection type	DIN 32676 & ASME-BPE connections available
Plating and Coating	Shaft/Housing : 316 Stainless Steel
Mounting	The SCS Series rotary unions connect at the ferrule clamp connection inlet and outlet

Notice : The provided technical data are the higher limits recommended in static condition. To obtain the correct dimensioning of the product, it is necessary to hold account of all the applicable dynamic forces, including the inertia of the manipulator, the configuration of the tools and the external forces applied.

The SCSM Series are engineered to minimize fluid stagnation points with smooth flow lines for clean fluid transfer. Specialized bearings are located in a sealed chamber designed keep lubricants in and contaminants out. The SCSM series feature food grade seals and bearing lubricant.



Advantages

- Long operating lifetime
- Permanent lubrication bearings
- CIP capability



Benefits

- Avoid the need of complex piping arrangements
- Increased machinery performances
- Piping maintenance mitigated



p e s

product
engineering
services

expertise in connectivity