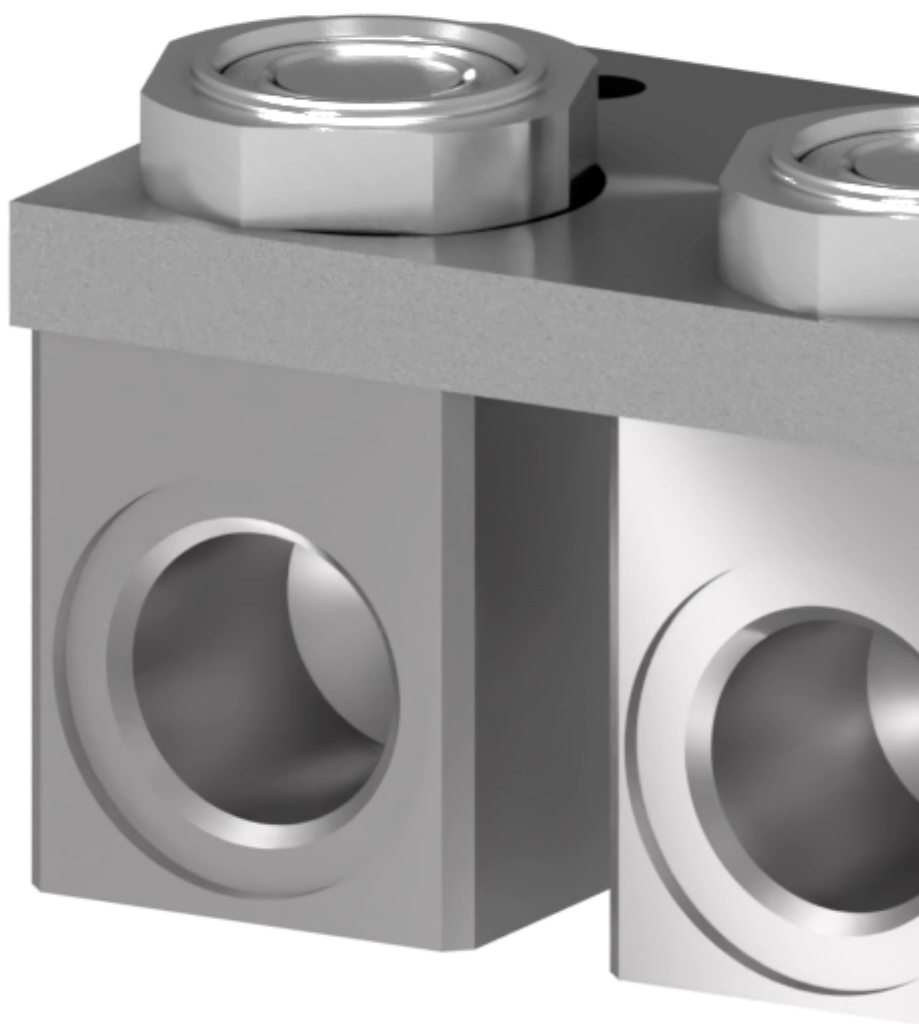


variables/V-color

# **Robot Tool Changers | Pneumatic module | S-EM-R-U-2V1/2BS**







## Feature

### S-EM-R-U-2V1/2BS

<b>Type</b>	Pneumatic module
<b>Weight</b>	0.620 kg
<b>Pass Through Utilities</b>	2 x 1/2" BSPP
<b>Material</b>	Aluminum, Stainless steel, Brass

**Notice :** The provided technical data are the higher limits recommended in static condition. To obtain the correct dimensioning of the product, it is necessary to hold account of all the applicable dynamic forces, including the inertia of the manipulator, the configuration of the tools and the external forces applied.

## Standard air module

The Cover Assembly protects the tool and tool changer from airborne debris when the tool is not in use by the robot. The cover assembly mounts directly to the back of the compliant fixture / weldment base assembly and can be adjusted in several positions depending on tool type, location, application, and environment. The pneumatic actuation clamp used to open and close the cover assembly is equipped with two different flow controls to vary the speed of the cover as well as two position sensors to verify opening and closing of the cover.



**Advantages**



**Benefits**



---

**expertise in connectivity**