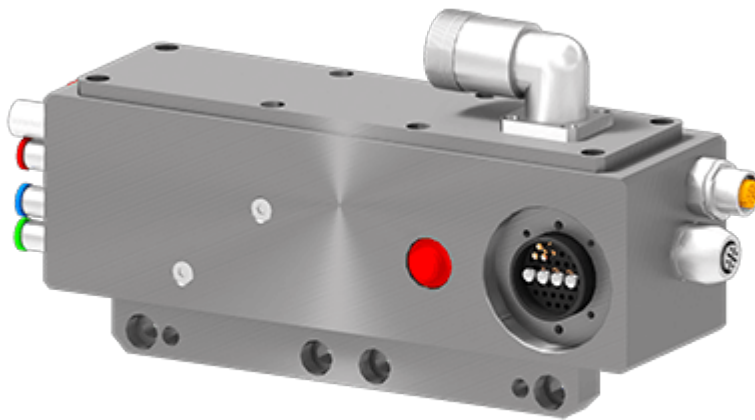


variables/V-color

Robot Tool Changers | Module électrique | S.1-EM-R-E-SEL-L38-02-S



Control module (3 Control valves, 3 pressure sensors, TC control by I/O, safety sensor "Tool presence", Profinet connection to tool), M23-19pins 90° connector, M12-4 pins D-Coded connector (Profinet). Gold plated contacts. Net weight : 1.65 kg. Country of origin : Belgium. HS Code : 84799070.



Feature

S.1-EM-R-E-SEL-L38-02-S

| | |
|-------------------------------|--|
| Type | Module électrique |
| Weight | 1.650 kg |
| Size | 63 x 233 x 64 mm |
| Pass Through Utilities | 3 x KJ06 1/8" 6mm |
| Material | Aluminum, Stainless Steel, Gold, Plastic, Copper |
| Connector | 1 x M12 COD-D 4CTS Profinet 1 x IC 19CTS |
| Sensor | Tool presence safety switch |
| Safety Loop | Pneumatic safety loop 3EV+3 pressure switches |

Notice : The provided technical data are the higher limits recommended in static condition. To obtain the correct dimensioning of the product, it is necessary to hold account of all the applicable dynamic forces, including the inertia of the manipulator, the configuration of the tools and the external forces applied.

A TOR standard control module, narrow version L38

Along with the standard offer of pneumatic and electrical modules, PES proposes engineering capabilities for developing custom electrical/pneumatic modules or accessories for Sigma Series tool changers. We offer a wide range of off-the-shelf custom modules enhancing Sigma tool changers communication capabilities or safety and if needed, we will be pleased to adapt our product to your specific

requirements. Standard Air/Water modules are listed below. Do not hesitate to contact us to share your specific requirements in order to find the right solution that meets your needs



Advantages



Benefits



pes

product
engineering
services

expertise in connectivity