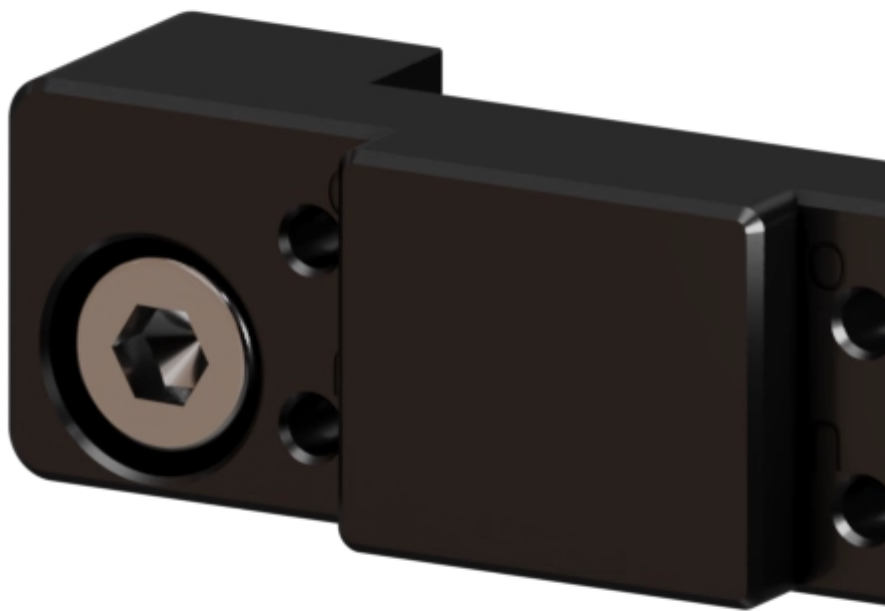


# **Manual Robotic Tool Changers | Other | AP- SEK100-SHW160**

**Sous titre**

**Range of manual interchange adapter plates**



Adapt any electric or hybrid module to the different models of robots thanks to this adapter plate

---

In order to adapt the different modules of the SEK range to the SHWs, we have developed an adapter plate which allows the electrical and hybrid modules to be connected.

## **Advantages**

### **Benefits**

- Simple design and easy to you
- Cost-effective

## **Related industries**

### **At your service**

Need help in selecting the right product ?

Need more information ?

[Contact us](#)

- [PDF](#)

- 
- [Technical Info](#)
  - [Drawings](#)
  - [3D](#)

## **AP-SEK100-SHW160**

**Operating temperature** -30 to +120 °C

**Type** Other

**Protection rating** IP40

**Contact durability** 50000 cycles

**Materials** Al, anod.

**Operating pressure** -1 to 8 bar

### **Electrical Ducts**

**Notice :** The provided technical data are the higher limits recommended in static condition. To obtain the correct dimensioning of the product, it is necessary to hold account of all the applicable dynamic forces, including the inertia of the manipulator, the configuration of the tools and the external forces applied.

### **No files actually**

For more informations

[Contact us](#)

### **No files actually**

For more informations

[Contact us](#)

The manual Tool Changers are designed and manufactured by GRIP Gmbh.

Product Engineering Services is the Distributor of GRIP for the territory of Belgium and France

# Applications