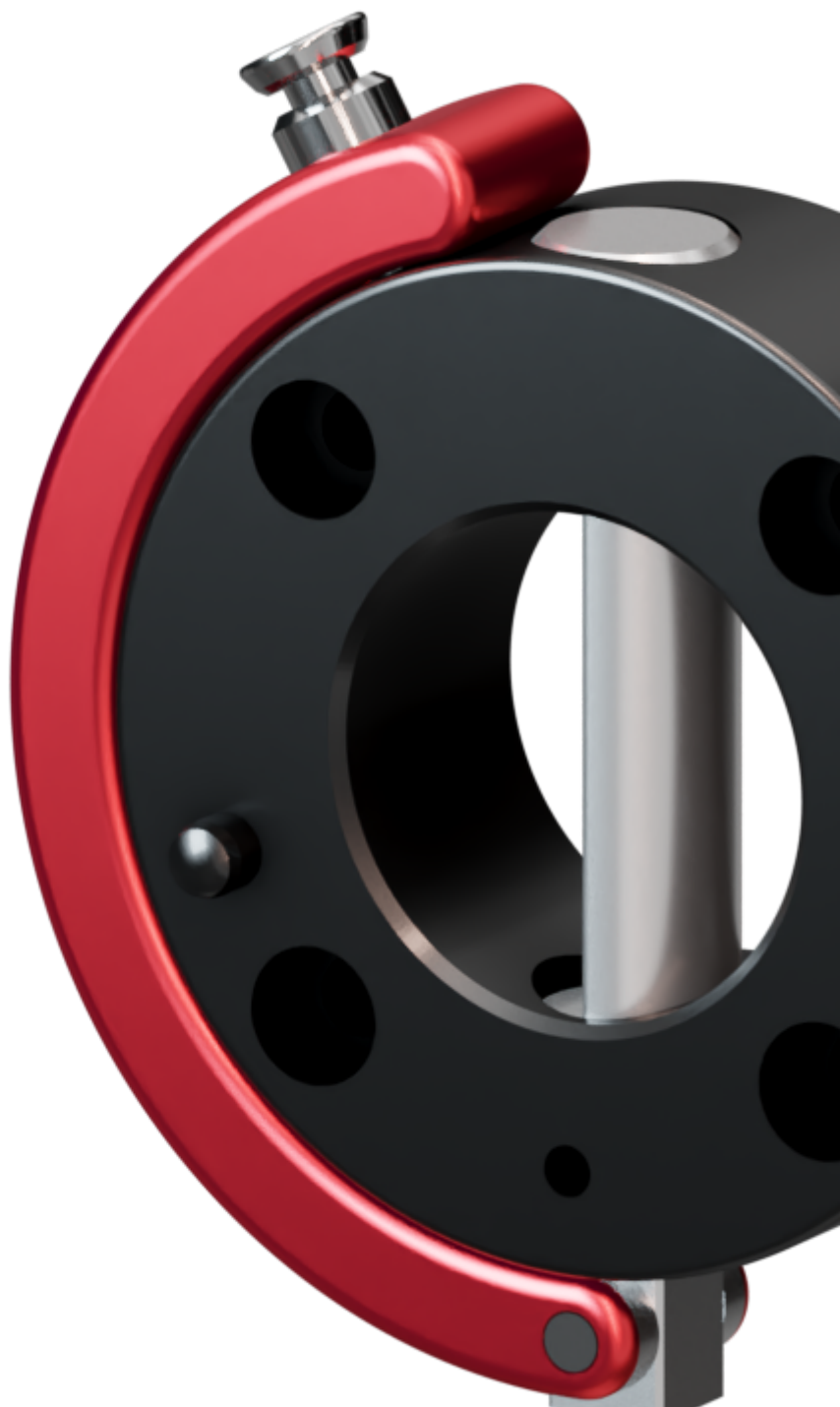
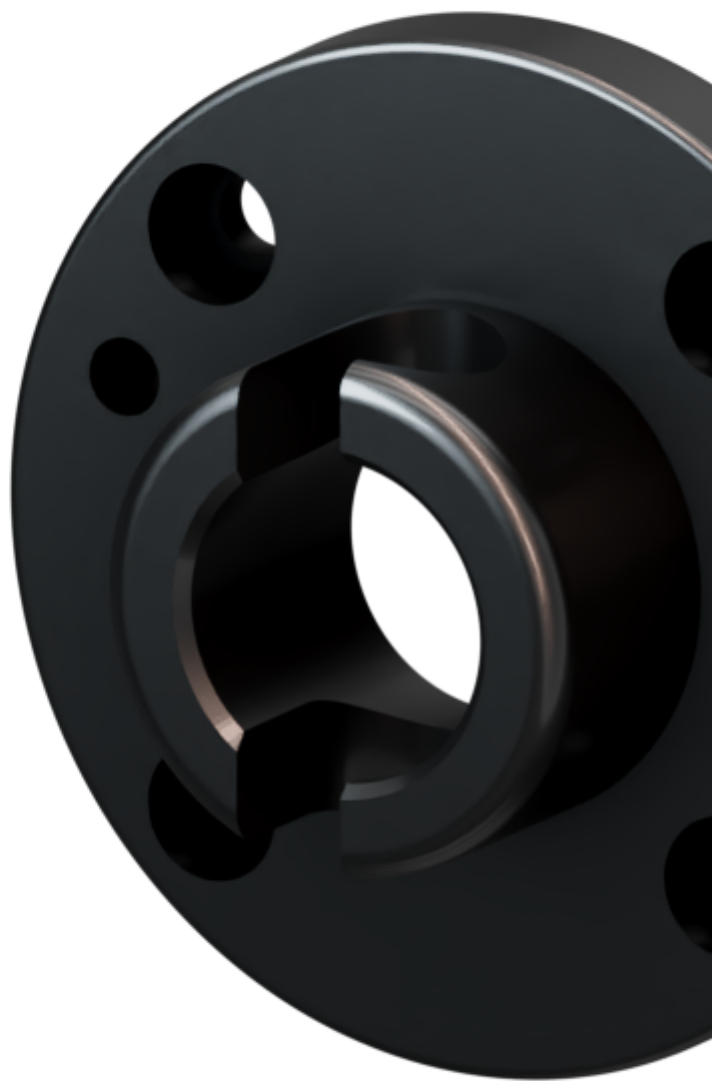


# **Robot Manual Tool Changers || MGW080**

**The Universal MGW Connector - Safer and more precise tool changer for your applications.**







The new MGW Connector is our universal quick changer for every application. The new system is of higher quality and offers more safety and accuracy. The innovations are a response to the current requirements of our customers. A centering disc can be installed on both the upper assembly (robot side) and lower assembly (tool side) of the robot and ensures that the tools are correctly aligned with the robot arm.

---

Our manual tool changers range aims at solving quick equipment change issues for many applications. These tool changers can be seen as quick, repeatable, and reliable mechanical connectors that can serve many purposes: robot tooling change, special machinery utility change or even making a tool stand movable. Installing such a kind of quick connection device makes your equipment versatile, and upgradable, and eases maintenance operation while reducing downtimes.

## **Advantages**

- Withstands high loads with low dead weight
- Can be released and closed with one handle
- During locking, the lower assembly is pulled around the locking stroke
- Interface according to DIN EN ISO 9409-1

## **Benefits**

- Does not require a deep review of the mechanical structure to be integrated.
- Cost savings through reduced maintenance downtime.
- Improved equipment versatility and upgradability and then extended productivity.
- Mitigate the need of specifically designed mounting interfaces

## Related industries

## At your service

Need help in selecting the right product ?

Need more information ?

[Contact us](#)

- [PDF](#)
- 

- [Technical Info](#)
- [Accessories](#)
- [Drawings](#)
- [3D](#)

### **MGW080 MGW080-N**

<b>Basic material</b>	AL, Anod. Steel, nitrated	
<b>Repeat accuracy</b>	0,02 mm	
<b>Pitch circle diameter</b>	63 mm	
<b>Tension Fz</b>	1000 N	3000 N
<b>Compression -Fz</b>	157 kN	313 kN

## Operating conditions

**Operating temperature range** -30 to +120 °C

**Operating pressure** 6 bar  $\pm$ 1

**Notice:** The provided technical data are the higher limits recommended in static condition. To obtain the correct dimensioning of the product, it

is necessary to hold account of all the applicable dynamic forces, including the inertia of the manipulator, the configuration of the tools and the external forces applied.

### **No files actually**

For more informations

[Contact us](#)

### **No files actually**

For more informations

[Contact us](#)

The manual Tool Changers are designed and manufactured by GRIP Gmbh.

Product Engineering Services is the Distributor of GRIP for the territory of Belgium and France