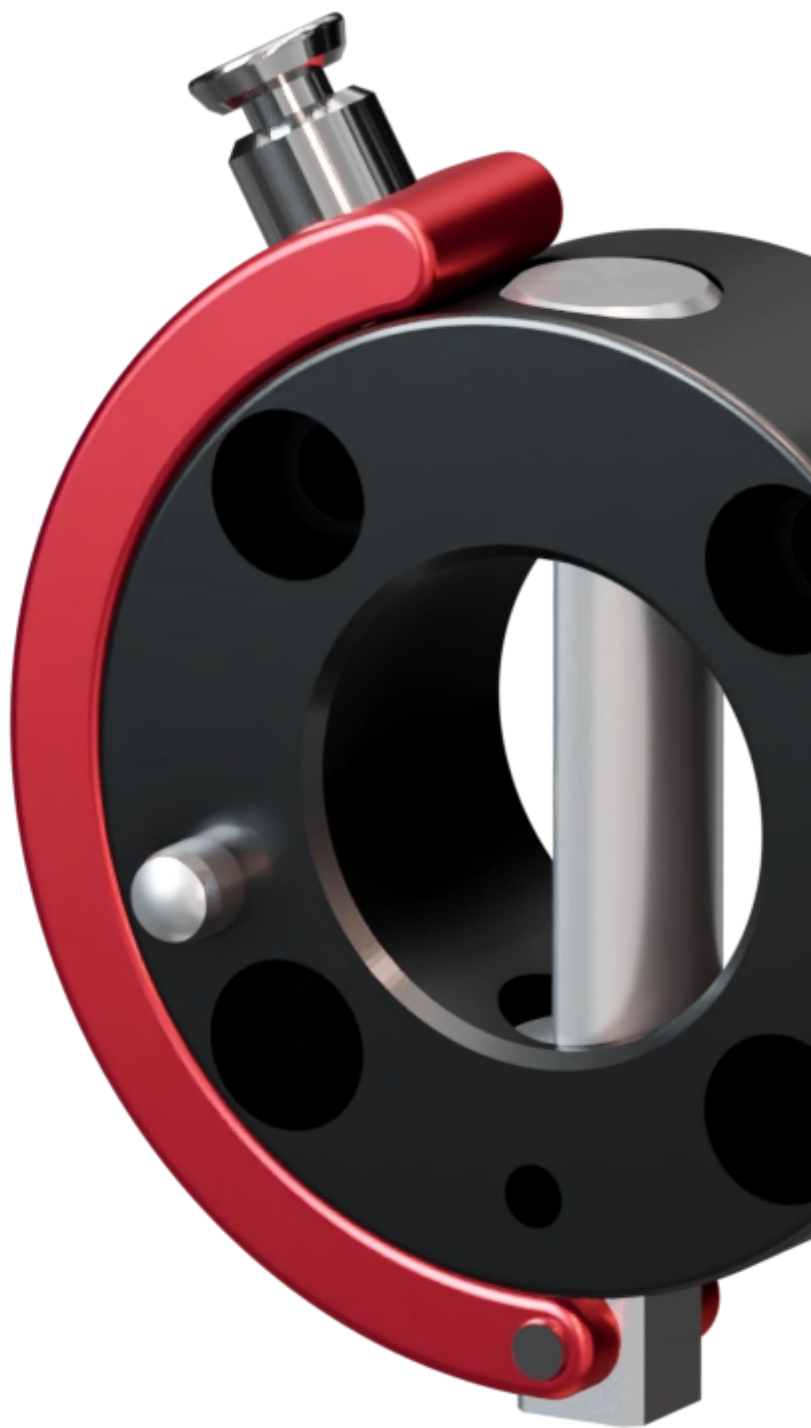


variables/V-color

Robot Tool Changers | | MGW063





Feature

	Master Adaptor	Tool Adaptor
Reference	G-MGW063- 2O	G-MGW063- 2U
Payload	50 kg	
Moment - Mx, My	900 Nm	
Moment - Mz	89 Nm	
Repeatability - X, Y	0.020 mm	
Maximum Axial Tensile Force (no damage if exceeded)	AL, Anod.	



Operating conditions

Operating temperature	5-60°C
Operating pressure	6 bar \pm 1
User pneumatic pressure	6 bar \pm 1

The Universal MGW Connector - Safer and more precise tool changer for your applications.

Our manual tool changers range aims at solving quick equipment change issues for many applications. These tool changers can be seen as quick, repeatable, and reliable mechanical connectors that can serve many purposes: robot tooling change, special machinery utility change or even

making a tool stand movable. Installing such a kind of quick connection device makes your equipment versatile, and upgradable, and eases maintenance operation while reducing downtimes.



Advantages

- Withstands high loads with low dead weight
- Can be released and closed with one handle
- During locking, the lower assembly is pulled around the locking stroke
- Interface according to DIN EN ISO 9409-1



Benefits

- Does not require a deep review of the mechanical structure to be integrated.
- Cost savings through reduced maintenance downtime.
- Improved equipment versatility and upgradability and then extended productivity.
- Mitigate the need of specifically designed mounting interfaces



pes

product
engineering
services

expertise in connectivity