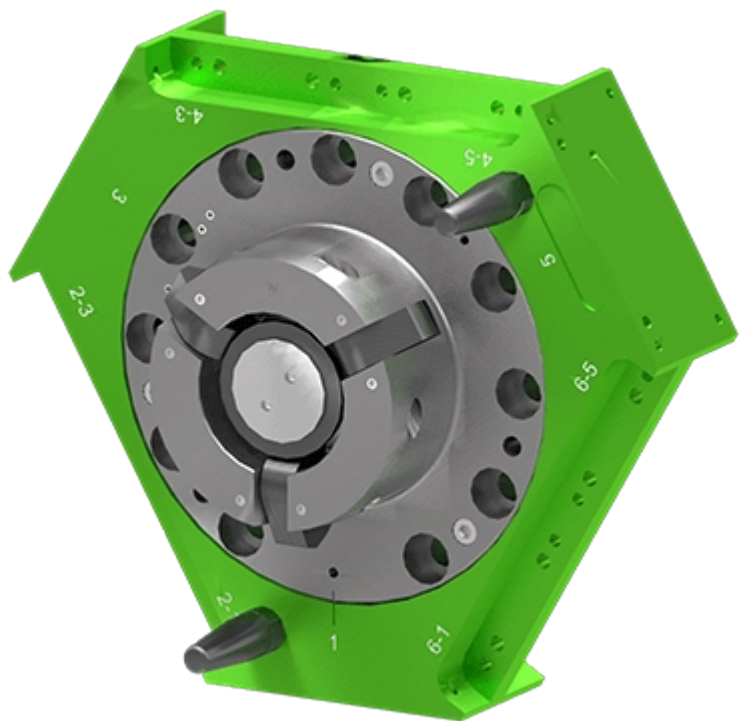


variables/V-color

# Robot Tool Changers || Epsilon E160



## Feature

	Master Adaptor	Tool Adaptor
Reference	ER160	ET160
Payload	525 kg	

	<b>Master Adaptor</b>	<b>Tool Adaptor</b>
<b>Moment - Mx, My</b>	3775 Nm	
<b>Moment - Mz</b>	4 Nm	
<b>Size</b>	242.9x280.5x120 mm	242.9x280.5x120 mm
<b>Weight</b>	13.890 kg	13.890 kg
<b>Couple/uncouple port</b>	G1/8	n/a
<b>Repeatability - X, Y</b>	0.020 mm	
<b>Repeatability - Z</b>	0.020 mm	
<b>Maximum Axial Tensile Force (no damage if exceeded)</b>	37.120N @ 0 bar couple port input pressure	



## Operating conditions

**Operating temperature** 5-60°C

**Operating pressure** 6 bar  $\pm$ 1

**User pneumatic pressure** 6 bar  $\pm$ 1

## Epsilon exceptional lifting force for a small footprint

The line was designed to be a comprehensive family of tool changers that cover the entire range of the current CXC, MXC and Sigma tool changers we already make (ranging from 10kg. to 1,500kg.)

This is a Tool Changer Evolution. Our cam design has stood the test of time and even with extensive research; we couldn't do anything better. In fact, we are so confident in our locking mechanism that we offer a

lifetime guarantee on it. We also made sure to incorporate new market requirements and customer feedback to design these tool changers; that's why we extended the availability of couple/uncouple sensing and came up with a direct bolt design to limit the need of adaptor plates.



### **Advantages**

- High Strength Aluminum Alloy Body
- **Cam Locking Mechanism with :**
  - Lifetime Guarantee
    - Self-Centering
    - Wear Compensating
    - Self-Cleaning
    - Positive Cam Retraction
  - Optional Couple/Uncouple Sensing
  - Optional Tool Present Sensing
  - 8x G1/8 User Pneumatic Ports



### **Benefits**

- Maximul robot payload still available
- Reduced maintenance cost
- Minimized total cost of ownership
- Easier installation, less accessories costs



---

**expertise in connectivity**